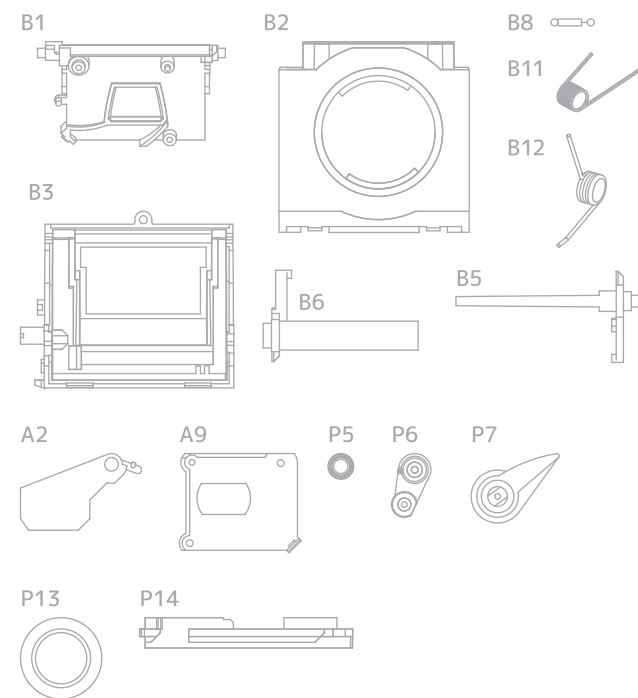




Content ▶

Lomographic Society International
Hollergasse 41, A-1150 Vienna, Austria
Tel: +43-1-899 44 0, Fax: +43-1-899 44 22
customerservice@lomography.com • www.lomography.com



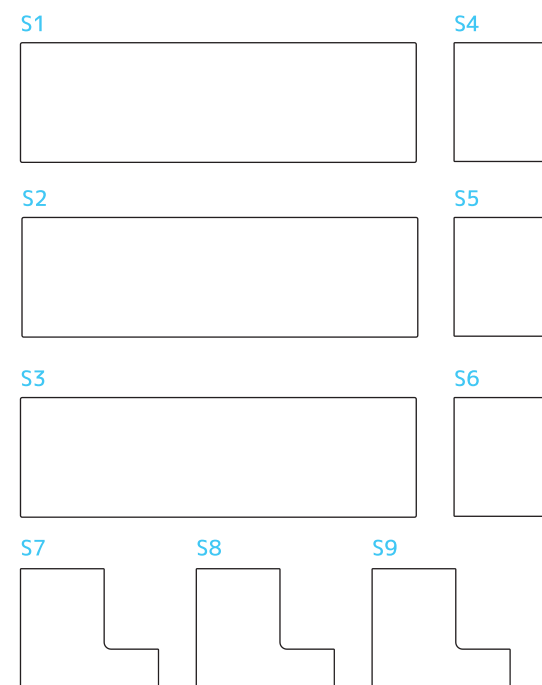
LIGHT CHAMBER PARTS

The Light Chamber is already assembled.

B1: Mirror Holder
B2: Front Mirror Box
B3: Rear Mirror Box
B5: Mirror Swing Lever 1
B6: Mirror Swing Lever 2
B8: Shutter Spring Close
B11: Shutter Spring Open
B12: Mirror Swing Lever 1 Spring
B14: Mirror

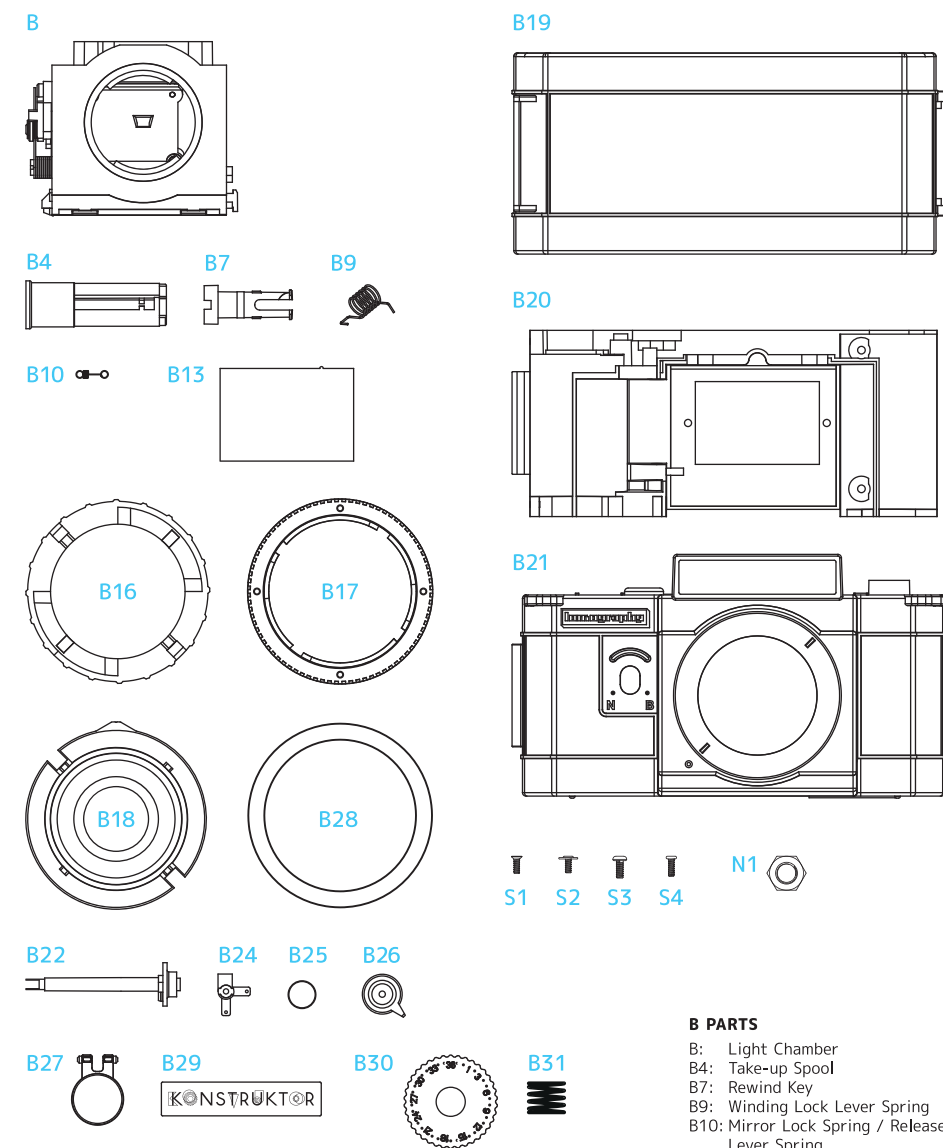
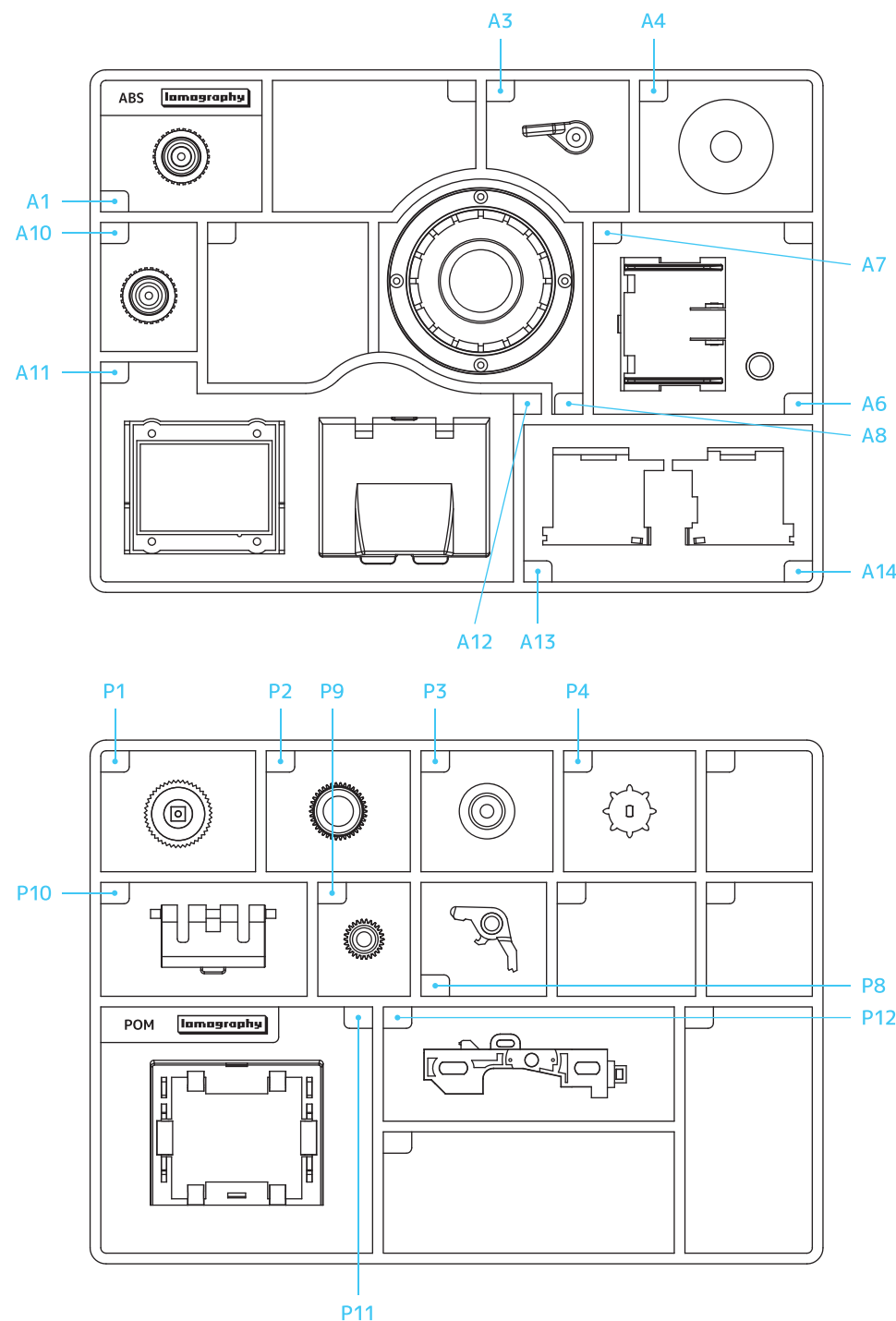
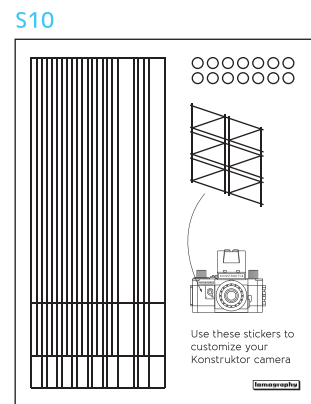
A2: Shutter Blade
A9: Shutter Cover

P5: Sleeve
P6: Shutter Kick Lever-1
P7: Shutter Kick Lever
P13: Lens Retainer
P14: Mirror Holder Lock



CUSTOMIZATION PARTS

S1: Black Rear Leather
S2: White Rear Leather
S3: Red Rear Leather
S4: Black Front Leather 1
S5: White Front Leather 1
S6: Red Front Leather 1
S7: Black Front Leather 2
S8: White Front Leather 2
S9: Red Front Leather 2
S10: PVC Sticker Sheet



ABS PARTS

A1: Film Advance Wheel
A3: Mirror Reset Lever
A4: Frame Counter
A5: Film Transportation Signal
A6: Shutter Release Button
A7: Hood-1
A8: Lens Barrel
A10: Rewind Wheel
A11: Focus Screen Holder
A12: Hood Finder Cover
A13: Hood-3
A14: Hood-2

POM PARTS

P1: Winding Lock gear
P2: Counter Gear-1
P3: Counter Gear-2
P4: Sprocket Gear
P8: Winding Lock Lever
P9: Gear Ideal
P10: Film Door Lock
P11: Hood holder
P12: Release Lever

B PARTS

B: Light Chamber
B4: Take-up Spool
B7: Rewind Key
B9: Winding Lock Lever Spring
B10: Mirror Lock Spring / Release Lever Spring
B13: Focus Screen
B16: Lens Lock Spring
B17: Focus Ring
B18: Lens Barrel
B19: Film Door
B20: Camera Body
B21: Front Cover
B22: Sprocket CAM
B24: Shutter B Lock
B25: Shutter B Switch Cover
B26: Shutter B Switch
B27: VF Magnifier
B28: Lens Front Plate
B29: Metal Name Plate
B30: Frame Counter
B31: Film Counter Spring